



---

**2016 OCEAN STATE OPEN**  
Hosted by Smithfield Figure Skating Club  
July 23<sup>rd</sup> & July 24<sup>th</sup>



The 2016 OCEAN STATE OPEN will be conducted in accordance with the rules and regulations of U.S. Figure Skating, as set forth in the 2016-2017 rulebook, as well as any pertinent updates which have been posted on the U.S. Figure Skating website.

This competition is open to all eligible, restricted, reinstated or readmitted persons as defined by the Eligibility Rules, and is a currently registered member of a U.S. Figure Skating member club, a collegiate club or an individual member in accordance with the current rulebook. Please refer to the current rulebook for non-U.S. Citizens.

**ELIGIBILITY/TEST LEVEL:**

**Test level:** Competition level is the highest test passed as of the entry deadline in the discipline the skater is entering. Entrants may skate one level above that for which they qualify, but they may not skate down in any event. Skaters who placed in the top four in a final round of their last qualifying competition in their divisions must move up one level, except for novice and higher.

**Age restrictions/requirements:** Skaters entering juvenile free skate events (Well Balanced Program) must be under 14 years of age at the close of entries. Skaters entering open juvenile free skate events (Well Balanced Program), must be at least 14 years of age at the close of entries.

Skaters entering beginner-pre-juvenile events will be divided as closely as possible by age should the number of entries warrant more than one group.

**ENTRIES:** Must be made online at <http://comp.entryeeze.com/Home.aspx?cid=316> via the Entryeeze website. **All entries must be entered online no later than midnight June 23, 2016.** Any entry entered after this date will only be accepted by the decision of the competition committee and may be subject to a late entry fee.

Entry Fees:      \$85 – First IJS Event      \$50 – Additional IJS Event  
                         \$75 – First 6.0 Event      \$40 – Additional 6.0 Event

**REFUND POLICY:** Entry fees will not be refunded after June 23, 2016 unless no competition exists or the event is canceled. There will be no refunds for medical withdrawals. The online processing fees are not refundable. Checks returned for non-sufficient funds and contested credit card charges will be issued a \$25 fee. Payment of the fee will be required before the skater is allowed to participate in practice ice or events.

**FACILITIES:**

Smithfield Municipal Ice Rink  
109 Pleasant View Avenue, Smithfield, RI 02917  
Telephone: 401-233-1051  
Rink measures 185 x 85 feet with rounded corners.

*This event is a standard U.S. Figure Skating Nonqualifying Competition  
LG/10-1-14*



**MUSIC:** CDs only – No paper labels. (No CD-RWs) The official competition music must be turned in at the registration table at the time of check-in. A duplicate CD should be readily available. Every reasonable care will be taken, but the Smithfield FSC cannot be responsible for CDs left at the end of the competition. Please have separate CDs for practice and competition.

**LIABILITY:** U.S. Figure Skating, Smithfield Figure Skating Club and Smithfield Municipal Ice Rink accept no responsibility for injury or damage sustained by any participant in this competition. This is in accordance with Rule 1600 of the official U.S. Figure Skating Rulebook.

**JUDGING SYSTEM:**

The International Judging System (IJS) will be used for the following events: Short Programs Intermediate thru Senior and Free Skating Programs Juvenile thru Senior.

All competitors skating in the above IJS events must submit the planned program content form on EntryEeze at <http://comp.entryeeze.com/Home.aspx?cid=316> by **June 30, 2016**.

The 6.0 Majority Judging System will be used for: Free Skating Programs Beginner, High Beginner, No Test and Pre-Preliminary thru Pre-Juvenile; all Compulsory Moves, Moves in the Field and Showcase Events.

**REGISTRATION:** Competitors should arrive at the rink at least one hour before their scheduled event. Check in at the Registration table located just outside the rink entrance or in the case of inclement weather Registration table will be located in the rink lobby. Please register promptly upon arrival.

**PRACTICE ICE:** Will be available to purchase online at EntryEeze shortly after the competition schedule is posted there. Cost will be \$20 for 20 minutes. Any remaining practice ice will be sold the day of the competition for \$25 for 20 minutes.

**PHOTOGRAPHY/VIDEOGRAPHY:** Will be provided by Snap Shot Action Sports Photography, at [www.snapshotsportsphotography.com](http://www.snapshotsportsphotography.com).

**AWARDS:** Medals will be awarded for first, second, third and fourth place winners.

**SCHEDULES:** Competition information will be posted on EntryEeze. Schedule will not be mailed but can be found on EntryEeze and Smithfield FSC's website [www.smithfieldfsc.org](http://www.smithfieldfsc.org) approximately one week prior to the competition. PLEASE DO NOT CALL OR EMAIL FOR THE SCHEDULE. All schedules are subject to change.

**INFORMATION REGARDING COACHES:**

U.S. Figure Skating Rule MR 5.11 Coach Registration

In order to be granted access to work within U.S. Figure Skating sanctioned activities, each coach must complete the following requirements on an annual basis by July 1:

A. Must be a current full member of U.S. Figure Skating - either through a member club or as an individual member;

B. Must complete the coach registration process through the U.S. Figure Skating Members Only site, submit proper payment for the annual registration fee of \$30 and, if 18 years of age or older, successfully pass the background screen.

- C. Must complete the appropriate CER courses (A, B, C or D) depending on the highest level of students being coached as of July 1. See rule MR 5.12.
- D. Must submit proof of current general liability insurance with limits of \$1 million per occurrence/\$5 million aggregate.

For Basic Skills ONLY coaches - Any person, 18 and older, instructing in a U.S. Figure Skating Basic Skills Program must have successfully passed the annual background screen and be registered as a Basic Skills instructor member.

The local organizing committee/club will have a list of compliant coaches who are cleared for a credential at the competition. Coaches will need to check in at the event registration desk and show a government issued photo I.D. to receive a credential.

If a coach cannot provide a photo I.D. and is not on the list or cannot produce the necessary documents, he or she will not be allowed a credential – no exceptions. We strongly urge *all* coaches to have their cards with them. Non-credentialed coaches will not be permitted in the designated coaching area at rink side during events including practice sessions. Coaching at U.S. Figure Skating events without proper registration is an ethics violation which is reported to U.S. Figure Skating and PSA.

For more information regarding Coach Compliance, please refer to:

<http://www.usfigureskating.org/Content/Coaching%20Compliance%20Toolkit.pdf>

**CONTACT INFO:**

If you have questions, please contact us by email at [oceanstateopen@smithfieldfsc.org](mailto:oceanstateopen@smithfieldfsc.org)

**ACCOMODATIONS:**

Holiday Inn Express, 1010 Douglas Pike Smithfield RI (401)231-6300

Courtyard by Marriott 636 George Washington Hwy, Lincoln, RI (401)333-3400

All Seasons Inn & Suites 355 George Washington Hwy, Lincoln, RI (401)232-2400

**ADMISSION:** Free

**GOOD LUCK NOTES:**

Send a unique note of encouragement, good luck, and love to your favorite Ocean State Open competitor. These notes will appear in the competition program for all to enjoy. What a wonderful way to let your skater know how proud you are of his or her accomplishments. The cost of each note is \$5. Please limit your sentiment to 30 words or less. **Good Luck Notes may be purchased online at EntryEeze through June 30, 2016.**

**SANCTIONED BY:**



(Sanction # 24149)



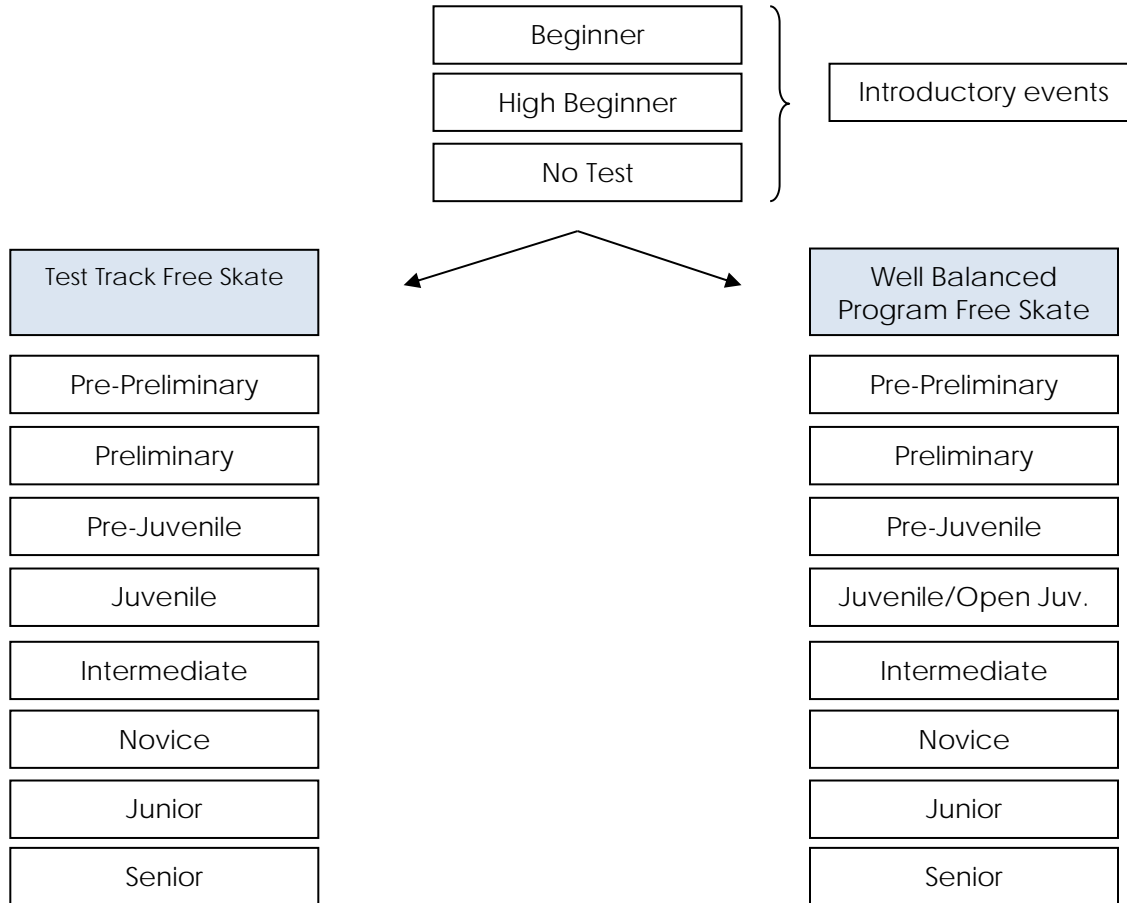


# U.S. Figure Skating Nonqualifying Competitions

## SINGLES FREE SKATING EVENTS

See current rulebook or go to [www.usfigureskating.org/new\\_judging.asp?id=361](http://www.usfigureskating.org/new_judging.asp?id=361) for current rules and requirements.

Illustration of Singles Free Skating Events:



- A. Introductory free skate events (See chart on page below)
- B. Test Track free skate events (See chart on page below)
- C. Well Balanced Program free skate  
2016-2017 Season Program Requirements will be used (as posted on the USFS Website by the entry deadline).

\*\*\*SKATERS MAY ONLY ENTER ONE FREE SKATING EVENT\*\*\*



**EVENT:** Introductory Levels Free Skate Program - Beginner, High Beginner and No Test  
 General event parameters:

1. Skaters will skate to the music of their choice. Vocal music is permitted at all levels.
2. Level will be determined by the highest free skate test passed. Skaters may compete at the highest level they have passed, or skate up to one level higher.
3. Minimum number of spin revolutions are in parentheses following the spin description. Revolutions must be in position.

Level	Jumps	Spins	Step Sequences	Qualifications
Beginner 1:40 Maximum	<p><i>Max. 5 jump elements:</i></p> <ul style="list-style-type: none"> <li>• Jumps with no more than one-half rotation (front to back or back to front).</li> <li>• Max. 2 jump sequences</li> <li>• Max. 2 of any same jump</li> </ul>	<p><i>Max. 2 spins:</i></p> <ul style="list-style-type: none"> <li>• Two upright spins, no change of foot, no flying entry (Min. 3 revolutions)</li> </ul>	Connecting moves and steps should be demonstrated throughout the program	Skaters may not have passed tests higher than U.S. Figure Skating Basic Skills free skating badge tests
High Beginner 1:40 Maximum	<p><i>Max. 5 jump elements:</i></p> <ul style="list-style-type: none"> <li>• Jumps with no more than one-half rotation (front to back or back to front including half-loop)</li> <li>• Single rotation jumps: Salchow and toe loop only.</li> <li>• Max. 2 jump combinations or sequences</li> <li>• Max. 2 of any same type jump.</li> </ul>	<p><i>Max. 2 spins:</i></p> <ul style="list-style-type: none"> <li>• Two upright spins, change of foot optional, no flying entry (Min. 3 revolutions)</li> </ul>	Connecting moves and steps should be demonstrated throughout the program	Skaters may not have passed tests higher than U.S. Figure Skating Basic Skills free skating badge tests
No-Test 1:40 Maximum	<p><i>Max. 5 jump elements:</i></p> <ul style="list-style-type: none"> <li>• Single jumps, with the exception of the single Axel, are allowed</li> <li>• Maximum of 2 jump combinations or sequences</li> <li>• Jump combinations limited to 2 jumps except that one 3-jump combination with a maximum of 3 single jumps is permitted</li> <li>• Jump sequences limited to a maximum of 3 single jumps (half-loop is considered a listed jump with the value of a single loop when used in a sequence or combination)</li> <li>• No single Axels, double jumps or triple jumps</li> </ul>	<p><i>Max. 2 spins:</i></p> <ul style="list-style-type: none"> <li>• Spins may change feet and/or position</li> <li>• Spins may start with a fly</li> <li>• Minimum 3 revs.</li> </ul> <p>Spins must be of a different character (For definition see rule 4103E)</p>	<ul style="list-style-type: none"> <li>• Step sequence*</li> <li>• Must use one-half the ice surface</li> <li>• Moves in the field and spiral sequences are permitted but will not be counted as elements.</li> <li>• Jumps may be included in the step sequence</li> </ul>	





## U.S. Figure Skating Nonqualifying Competitions

### EVENT: Test Track Free Skate

#### General event parameters:

1. Skaters may not enter both a Well-Balanced Free Skate event and a Test Track Free Skate event at the same nonqualifying competition.
2. Skaters will skate to the music of their choice. Vocal music is permitted at all levels.
3. Level will be determined by the highest Free Skate test passed. Skaters may compete at the highest level they have passed, or "skate up" to one level higher.
4. Minimum number of spin revolutions are in ( ) following the spin description. Revolutions must be in position.
5. The following deductions will be taken:
  - 0.1 from each mark for each technical element included that is not permitted in the event description.
  - 0.2 from the technical mark for each extra element included.
  - 0.1 from the technical mark for any spin that is less than the required minimum revolutions.

Level	Jumps	Spins	Step Sequences	Qualifications
Pre-Preliminary 1:30 +/- 10 sec.	<i>Maximum of 5 jump elements:</i> <ul style="list-style-type: none"> <li>• Jumps with not more than one-half rotation (<i>front to back or back to front including half-loop</i>)</li> <li>• Single rotation jumps: Salchow, toe loop and loop only.</li> <li>• Max. 2 jump combinations or sequences</li> <li>• Max. 2 of any same type jump</li> </ul>	<i>Maximum of 2 spins:</i> <ul style="list-style-type: none"> <li>• Two spins of a different nature, one position only. No change of foot, no flying entry. (Min. 3 revolutions)</li> </ul>	Connecting moves and steps should be demonstrated throughout the program	Skaters may not have passed tests higher than U.S. Figure Skating pre-preliminary free skate test
Preliminary 1:30 +/- 10 sec.	<i>Maximum of 5 jump elements:</i> <ul style="list-style-type: none"> <li>• Jumps with not more than one rotation (no Axels).</li> <li>• Max. 2 jump combinations or sequences</li> <li>• Max. 2 of any same type jump</li> </ul>	<i>Maximum of 2 spins:</i> <ul style="list-style-type: none"> <li>• One spin in one position; no change of foot, no flying entry. (Min. 3 revolutions)</li> <li>• One spin consisting of a front scratch to back scratch; exit on spinning foot not mandatory. (Min. 3 revolutions per foot)</li> </ul>	Connecting moves and steps should be demonstrated throughout the program	Skaters must have passed at least the U.S. Figure Skating pre-preliminary free skate test but may not have passed tests higher than the preliminary free skate test



<p>Pre-Juvenile 2:00 +/- 10 sec.</p>	<p><i>Maximum of 5 jump elements:</i></p> <ul style="list-style-type: none"> <li>• Jumps with not more than one rotation (no Axels).</li> <li>• Max. 2 jump combinations or sequences</li> <li>• Max. 2 of any same type jump</li> </ul>	<p><i>Maximum of 2 spins:</i></p> <ul style="list-style-type: none"> <li>• One spin in one position, no change of foot (Min. 3 revolutions)</li> <li>• One combination spin: forward camel spin to forward sit spin; change of foot optional (Min. 6 revolutions). Spins may not fly.</li> </ul>	<p>One step sequence fully utilizing ice surface</p>	<p>Skaters must have passed at least the U.S. Figure Skating preliminary free skate test but may not have passed tests higher than pre-juvenile free skate test</p>
<p>Juvenile 2:15 +/- 10 sec.</p>	<p><i>Maximum of 5 jump elements:</i></p> <ul style="list-style-type: none"> <li>• Any single jumps, including Axel, are permitted.</li> <li>• Max. 2 jump combinations or sequences</li> <li>• Max. 2 of any same type jump</li> </ul>	<p><i>Maximum of 2 spins:</i></p> <ul style="list-style-type: none"> <li>• One solo spin in one position, no change of foot (Min. 4 revolutions).</li> <li>• One combination spin with one change of foot and at least one change of position, must include two of the basic spin positions. (Min. 4 revolutions per foot)</li> <li>• <i>Only solo spin may fly</i></li> </ul>	<p>One step sequence fully utilizing ice surface</p>	<p>Skaters must have passed at least the U.S. Figure Skating pre-juvenile free skate test but may not have passed tests higher than juvenile free skate test</p>
<p>Intermediate 2:30 +/- 10 sec.</p>	<p><i>Maximum of 6 jump elements:</i></p> <ul style="list-style-type: none"> <li>• Any single jumps.</li> <li>• Double jumps permitted: double Salchow and double toe loop.</li> <li>• Maximum of 3 jump combinations or sequences</li> <li>• Max. 2 of any same type jump</li> </ul>	<p>Maximum of 2 spins:</p> <ul style="list-style-type: none"> <li>• One must be a flying spin (min 5 revolutions),</li> <li>• One must be a combination spin with at least one change of foot and at least one change of position (minimum 4 revolutions per foot).</li> </ul>	<p>One step sequence fully utilizing ice surface</p>	<p>Skaters must have passed at least the U.S. Figure Skating juvenile free skate test but may not have passed tests higher than intermediate free skate test</p>

<p>Novice</p> <p>Ladies: 3:00 +/- 10 sec. Men: 3:30 +/- 10 sec.</p>	<p><i>Maximum of 7 jump elements for men and 6 for ladies:</i></p> <ul style="list-style-type: none"> <li>Any single jumps.</li> <li>Double jumps permitted: double Salchow, double toe loop and double loop.</li> <li>Maximum of 3 jump combinations or sequences</li> <li>Max. 2 of any same type jump</li> </ul>	<p><i>Maximum of 3 spins, of a different nature:</i></p> <ul style="list-style-type: none"> <li>One must be a combination spin with at least one change of foot and at least one change of position (min 5 revs per foot)</li> <li>The other spins are the option of the skater (min 6 revolutions per foot)</li> <li>All spins may fly</li> </ul>	<p>One step sequence or spiral sequence fully utilizing ice surface</p> <p>(see rule 4104 &amp; 4105 for remarks)</p>	<p>Skaters must have passed at least the U.S. Figure Skating intermediate free skate test but may not have passed tests higher than novice free skate test</p>
<p>Junior</p> <p>Ladies: 3:30 +/- 10 sec. Men: 4:00 +/- 10 sec.</p>	<p><i>Maximum of 8 jump elements for men and 7 for ladies:</i></p> <ul style="list-style-type: none"> <li>Any single jumps.</li> <li>Double jumps permitted: double Salchow, double toe loop, double loop and double flip</li> <li>Maximum of 3 jump combinations or sequences</li> <li>Max. 2 of any same type jump</li> </ul>	<p><i>Maximum of 3 spins of a different nature:</i></p> <ul style="list-style-type: none"> <li>One spin in one position (Min. 6 revolutions)</li> <li>One flying spin (Min. 6 revolutions)</li> <li>One combination spin consisting of all three basic positions and one change of foot (2 per position, min. 5 revolutions per foot)</li> </ul>	<p>One step sequence fully utilizing ice surface</p> <p>(See rule 4105 for remarks)</p>	<p>Skaters must have passed at least the U.S. Figure Skating novice free skate test but may not have passed tests higher than junior free skate test</p>
<p>Senior</p> <p>Ladies: 4:00 +/- 10 sec. Men: 4:30 +/- 10 sec.</p>	<p><i>Maximum of 8 jump elements for men and 7 for ladies:</i></p> <ul style="list-style-type: none"> <li>Any single jumps.</li> <li>Must include at least four different double jumps, one must be a double Lutz.</li> <li>Triple jumps are not permitted</li> <li>Maximum of 3 jump combinations or sequences</li> <li>Max. 2 of any same type jump</li> </ul>	<p><i>Maximum of 3 spins of a different nature:</i></p> <ul style="list-style-type: none"> <li>One spin in one position (Min. 6 revolutions)</li> <li>One flying spin (Min. 6 revolutions)</li> <li>One combination spin consisting of all three basic spin positions and one change of foot (2 per position, min. 5 revolutions per foot)</li> </ul>	<p><i>Men:</i> Two different step sequences, one being of advanced difficulty, both fully utilizing the ice surface. (See rule 4105 for remarks)</p> <p><i>Ladies:</i> One step sequence of advanced difficulty, covering the full ice surface and one spiral sequence. (See rule 4104 &amp; 4105 for remarks.)</p>	<p>Skaters must have passed at least the U.S. Figure Skating junior free skate test</p>



## SINGLES SHORT PROGRAM

2016-2017 Season Program Requirements will be used (as posted on the USFS Website by the entry deadline). The short program events listed below will be skated. Athletes and coaches are responsible for going to the U.S. Figure Skating rulebook for rules, program length, etc.

- A. Intermediate short program – Rule 4230
- B. Novice short program – Rule 4220
- C. Junior short program – Rule 4210
- D. Senior short program – Rule 4200

## SINGLES COMPULSORY MOVES:

### EVENT: Introductory Levels Compulsory Moves

Format: In simple program form, using a limited number of connecting steps, the skating order of the required elements is optional

- To be skated on ½ ice
- No music is allowed
- The skater must demonstrate the required elements and may use any additional elements from previous levels
- A 0.2 deduction will be taken for each element performed from a higher level
- *Skaters may have the option to skate one level higher in compulsories than their free skate program*

Level	Time	Skating rules/standards
Beginner	1:15 max.	<ol style="list-style-type: none"><li>1. Waltz jump</li><li>2. ½ jump of choice</li><li>3. Forward two-foot or one-foot spin, minimum three revolutions (free leg position optional)</li><li>4. Forward or backward spiral</li></ol>
High Beginner	1:15 max.	<ol style="list-style-type: none"><li>1. Toe loop jump</li><li>2. Salchow jump</li><li>3. Forward scratch spin - minimum three revolutions</li><li>4. Forward or backward spiral</li></ol>
No-Test	1:15 max.	<ol style="list-style-type: none"><li>1. Loop jump</li><li>2. Jump combination to include a toe loop (may not use a loop or Axel)</li><li>3. Solo spin - sit <u>or</u> camel spin - minimum three revolutions</li><li>4. Spiral sequence, must include a forward and backward spiral. Additional spirals and balance moves may be included.</li></ol>

## EVENT: COMPULSORY MOVES

### General event parameters:

1. Pre-Preliminary – Juvenile: Elements skated on ½ ice
2. Intermediate – Senior: Elements skated on full-ice
3. Elements may be performed only once
4. Music is not allowed

Level	Time	Skating rules/standards
Pre – Preliminary	1:15 max.	<ol style="list-style-type: none"> <li>1. Single flip <i>(for competitions held before December 31, 2014)</i> Single Toe Loop <i>(for competitions held after January 1, 2015)</i></li> <li>2. Jump combination: single/single (no Axel)</li> <li>3. Sit spin or camel spin - minimum three revolutions</li> <li>4. Spiral sequence with one forward spiral and one backward spiral (any edge)</li> </ol>
Preliminary	1:15 max.	<ol style="list-style-type: none"> <li>1. Single Lutz</li> <li>2. Jump combination: single/single (may include Axel)</li> <li>3. Back upright spin - minimum three revolutions</li> <li>4. Forward inside spiral</li> </ol>
Pre – Juvenile	1:15 max.	<ol style="list-style-type: none"> <li>1. Single jump (may include Axel)</li> <li>2. Jump combination: single/single (may include Axel)</li> <li>3. Layback spin or camel spin - minimum three revolutions</li> <li>4. Step sequence - circular</li> </ol>
Juvenile & Open Juv.	1:15 max.	<ol style="list-style-type: none"> <li>1. Single Axel</li> <li>2. Jump combination: single/single or double/single</li> <li>3. Layback spin or camel spin - minimum three revolutions</li> <li>4. Step sequence – circular</li> </ol>
Intermediate	1:30 max.	<ol style="list-style-type: none"> <li>1. Double Salchow or double toe loop</li> <li>2. Jump combination: single/single or double/single</li> <li>3. Flying spin, minimum five revolutions</li> <li>4. Step sequence – straight line</li> </ol>
Novice	1:30 max.	<ol style="list-style-type: none"> <li>1. Double loop</li> <li>2. Jump combination: double/single or double/double</li> <li>3. Flying spin - minimum five revolutions</li> <li>4. Step sequence – straight line</li> </ol>
Junior	1:30 max.	<ol style="list-style-type: none"> <li>1. Double flip</li> <li>2. Jump combination: double/double or triple/double</li> <li>3. Combination spin - minimum 10 revolutions</li> <li>4. Step sequence – straight line</li> </ol>
Senior	1:30 max.	<ol style="list-style-type: none"> <li>1. Double Lutz</li> <li>2. Jump combination: double/double or triple/double</li> <li>3. Combination spin - minimum 10 revolutions</li> <li>4. Step sequence – straight line</li> </ol>

## SINGLES MOVES IN THE FIELD:

### EVENT: Moves in the field

#### General event parameters:

1. Levels are based on the skaters' highest Moves in the field test passed.
2. A moves in the field competition event will consist of the skater performing two moves in the field patterns.
3. **The patterns to be skated depend on which quarter of the year the competition is held.** The skater will perform the two patterns listed for their level, based upon the date of the competition. If the competition falls over two quarters (for example, June 30<sup>th</sup> – July 2<sup>nd</sup>), the moves will be selected based on the start date of the competition listed in the announcement (in this example, the 2<sup>nd</sup> quarter).
4. Each skater will complete both of their required patterns consecutively in the order listed, pausing briefly in between.
5. The host club may choose to play background music, at a low volume, at their discretion.

Level	January 1- March 31 <sup>st</sup>	April 1 <sup>st</sup> – June 30 <sup>th</sup>	July 1 <sup>st</sup> – September 30 <sup>th</sup>	October 1 <sup>st</sup> – December 31 <sup>st</sup>
Pre-Preliminary	1. Forward perimeter stroking (1/2 rink only) 2. Basic consecutive edges (Forward outside & forward inside only)	1. Forward perimeter stroking (1/2 rink only). 2. Waltz eight (2 patterns/foot)	1. Basic consecutive edges (Backward outside & backward inside only). 2. Forward left & right spirals	1. Waltz eight 2. Forward left & right spirals
Preliminary	1. Forward & backward crossovers 2. Forward power 3-turns	1. Forward & backward crossovers 2. Consecutive outside & inside spirals	1. Forward circle eight 2. Alternating forward 3-turns.	1. Forward circle eight 2. Forward power 3-turns.
Pre-Juvenile	1. Forward & backward perimeter stroking. 2. Forward outside and backward inside 3-turns.	1. Forward & backward power change of edge pulls. 2. Forward inside and backward outside 3-turns.	1. Five-step mohawk sequence. 2. Backward circle eight.	1. Forward outside-backward inside 3-turns. 2. Backward circle eight.
Juvenile	1. Forward power circle 2. Backward power 3-turns.	1. Backward power circle. 2. Forward double 3-turns.	1. Eight-step mohawk sequence. 2. Forward double 3-turns.	1. Forward & backward free skate cross strokes. 2. Backward power 3-turns.
Intermediate	1. Brackets in the field 2. Spiral sequence	1. Brackets in the field 2. Forward twizzles (right forward outside & right forward inside only)	1. Forward twizzles (left forward outside & left forward inside only). 2. Inside slide chasse pattern.	1. Backward double three-turns. 2. Brackets in the field
Novice	1. Inside 3-turns/rocker-choctaws 2. Twizzles (Backward outside only)	1. Forward & backward outside counters. 2. Twizzles (Backward inside only)	1. Forward & backward inside counters. 2. Forward inside & outside loops.	1. Backward rocker choctaw sequence 2. Forward inside & outside loops.
Junior	1. Forward & backward outside rockers 2. Backward loop pattern.	1. Forward & backward inside rockers 2. Choctaw sequence	1. Straight line step sequence. 2. Power pulls	1. Straight line step sequence 2. Backward loop pattern.
Senior	1. Sustained edge step 2. Serpentine step sequence	1. Spiral sequence 2. Serpentine step sequence	1. Backward outside power double 3-turns to power inside double rockers. 2. Serpentine step sequence	1. Backward inside double 3-turns to power double outside rockers 2. Serpentine step sequence

## **SHOWCASE EVENTS**

According to the new USFS Guidelines.

Events will follow the National Showcase guidelines listed on the USFS Website.

Showcase is a form of skating in which the skater will be judged on overall performance.

Eligibility rules of the corresponding Free Skating levels apply to all showcase events.

Competitors will be judged in the following categories with no order of preference.

1. Technical Merit
2. Costume – its suitability to the music
3. Music Interpretation
4. Choreography – suitability of the program sequence and elements to the music
5. Audience Appeal – overall composition, appearance and style

### Light entertainment:

Preliminary/Pre Juvenile : 1:40 max

Juvenile-Novice: 2:10 max

Junior/Senior: 2:40 max

Teen/Young Adult: 2:10 max

Adult: 1:40 max